

### 组合U型夹 Clevis Joints with pin and circlip



#### 产品特性 Product features

- 材料CSB®M163
  - 高强度
  - 耐腐蚀抗灰尘
  - 降低噪音
  - 轻量化设计
  - 带有不锈钢插销与卡簧
  - 可与塑料关节轴承组合使用
- Material CSB®M163
  - High tensile force
  - Absolute corrosion-resistant
  - Noise free
  - Very lightweight
  - With pin and circlip
  - Can be used in combination with plastic rod ends

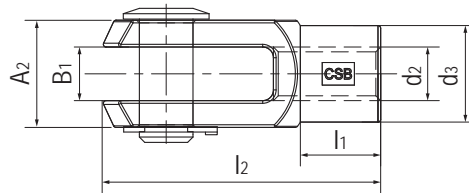
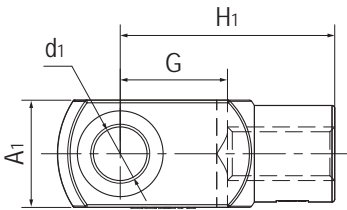
GC

CSB-BAL®

www.csb-ep.com  
sales@csb-ep.com

Tel: 0086 573 84186133/84185527  
Fax: 0086 573 84185517

### 标准规格 Standard specifications



产品编码 Part No.:

GCRE-10F

- 细牙螺纹 Fine thread
- 内径 Inner diameter
- 不锈钢 Stainless steel
- R: 右旋 Right
- L: 左旋 Left

产品编码 Part No.	d <sub>1</sub> [mm]	d <sub>2</sub> [mm]	d <sub>3</sub> [mm]	G [mm]	A <sub>1</sub> [mm]	A <sub>2</sub> [mm]	B <sub>1</sub> [mm]	l <sub>1</sub> [mm]	l <sub>2</sub> [mm]	H <sub>1</sub> [mm]	最大静态抗拉强度 Max. static tensile strength		最大径向静态负荷 Max. radial static load		最大扭矩 Max. tightening torque [Nm]	重量 Weight [g]
											短期 Short-term [N]	长期 Long-term [N]	短期 Short-term [N]	长期 Long-term [N]		
GCRE-06	6	M6	Φ10	12	12	12	6	9	31	24	1400	700	300	150	1.5	7.2
GCRE-08	8	M8	Φ14	16	16	16	8	12	42	32	2700	1350	650	325	5	16.7
GCRE-10	10	M10	Φ18	20	20	20	10	15	52	40	4700	2350	800	400	15	33.1
GCRE-12	12	M12	Φ20	24	24	24	12	18	61.3	48	5700	2850	900	450	20	52.4
GCRE-10F	10	M10*1.25	Φ18	20	20	20	10	15	51.3	40	4700	2350	800	400	6	33.1
GCRE-12F	12	M12*1.25	Φ20	24	24	24	12	18	61.3	48	5700	2850	900	450	15	52.4
GCLE-06	6	M6	Φ10	12	12	12	6	9	31	24	1400	700	300	150	1.5	7.2
GCLE-08	8	M8	Φ14	16	16	16	8	12	42	32	2700	1350	650	325	5	16.7
GCLE-10	10	M10	Φ18	20	20	20	10	15	52	40	4700	2350	800	400	15	33.1
GCLE-12	12	M12	Φ20	24	24	24	12	18	61.3	48	5700	2850	900	450	20	52.4
GCLE-10F	10	M10*1.25	Φ18	20	20	20	10	15	51.3	40	4700	2350	800	400	6	33.1
GCLE-12F	12	M12*1.25	Φ20	24	24	24	12	18	61.3	48	5700	2850	900	450	15	52.4